

A man in a light blue shirt is shown from the side, holding a tablet computer. He is looking at the screen, which displays a software interface with various charts and data. The background is a blurred industrial factory setting with machinery and equipment.

SIEMENS

Application example and brief instruction • 04/2015

LOGO! App V3.0

LOGO! 8 and LOGO! 7

Warranty and Liability

Note

The Application Examples are not binding and do not claim to be complete with regard to configuration, equipment or any contingencies. The Application Examples do not represent customer-specific solutions. They are only intended to provide support for typical applications. You are responsible for the correct operation of the described products. These Application Examples do not relieve you of the responsibility of safely and professionally using, installing, operating and servicing equipment. When using these Application Examples, you recognize that we cannot be made liable for any damage/claims beyond the liability clause described. We reserve the right to make changes to these Application Examples at any time and without prior notice. If there are any deviations between the recommendations provided in this Application Example and other Siemens publications – e.g. Catalogs – the contents of the other documents shall have priority.

We do not accept any liability for the information contained in this document.

Any claims against us – based on whatever legal reason – resulting from the use of the examples, information, programs, engineering and performance data etc., described in this Application Example shall be excluded. Such an exclusion shall not apply in the case of mandatory liability, e.g. under the German Product Liability Act (“Produkthaftungsgesetz”), in case of intent, gross negligence, or injury of life, body or health, guarantee for the quality of a product, fraudulent concealment of a deficiency or breach of fundamental contractual obligations (“wesentliche Vertragspflichten”). The compensation for damages due to a breach of a fundamental contractual obligation is, however, limited to the foreseeable damage, typical for the type of contract, except in the event of intent or gross negligence or injury to life, body or health. The above provisions do not imply a change of the burden of proof to your detriment.

Any form of duplication or distribution of these Application Examples or excerpts hereof is prohibited without the expressed consent of Siemens AG.

Security information

Siemens provides products and solutions with industrial security functions that support the secure operation of plants, solutions, machines, equipment and/or networks. They are important components in a holistic industrial security concept. With this in mind, Siemens' products and solutions undergo continuous development. Siemens recommends strongly that you regularly check for product updates.

For the secure operation of Siemens products and solutions, it is necessary to take suitable preventive action (e.g. cell protection concept) and integrate each component into a holistic, state-of-the-art industrial security concept. Third-party products that may be in use should also be considered. For more information about industrial security, visit <http://www.siemens.com/industrialsecurity>.

To stay informed about product updates as they occur, sign up for a product-specific newsletter. For more information, visit <http://support.industry.siemens.com>.

1 LOGO! App for LOGO! 8 and LOGO! 7

1.1 Overview of functions

Using the free of charge LOGO! App enables you to update the current process values of your LOGO! 8 and LOGO! 7 application with your smart phone or tablet PC via WLAN or Internet. This allows for switching digital signals as well as changing analog setpoint values. Calling up diagnostic values is also possible via the LOGO! App.

Your LOGO! App enables you ...

LOGO!
Create Connection

Type
 OBA7 OBA8

Name
LOGO! 8 Test PLC

IP Address / Hostname
192.168.56.132

Username
App User

Password
.....

... to configure connections to more than one LOGO!

For each LOGO! connection you can assign your own profile with user-defined connection name and IP address. This enables the later distinction between several connections or configured values.

Access to each individual LOGO! connection can be protected by a separate password.

LOGO!
Set Password

Please set password to protect your configuration data. If left blank, no password is set.

Enter New Password:
[Input Field]

Confirm New Password:
[Input Field]

Save

... set a password for the LOGO! App

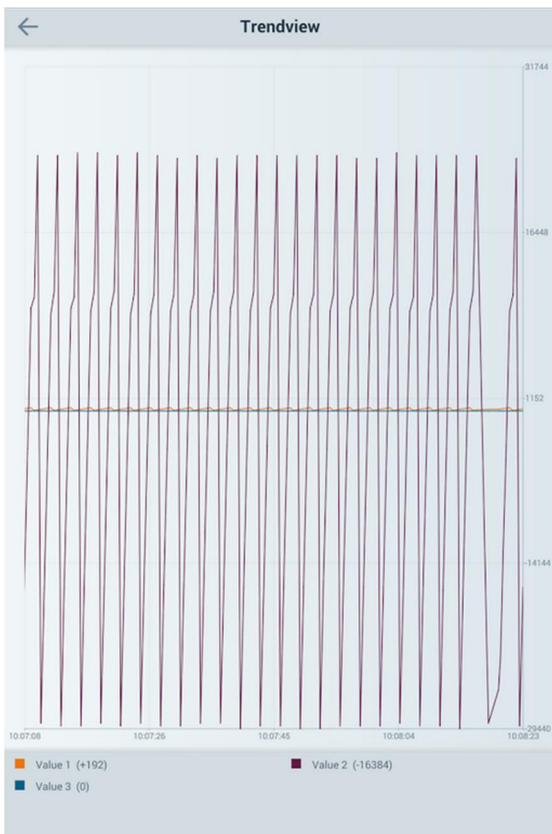
To protect the general access to the App you can specify a respective password for your App.

... In addition, you can assign a separate password for each configured LOGO! connection.



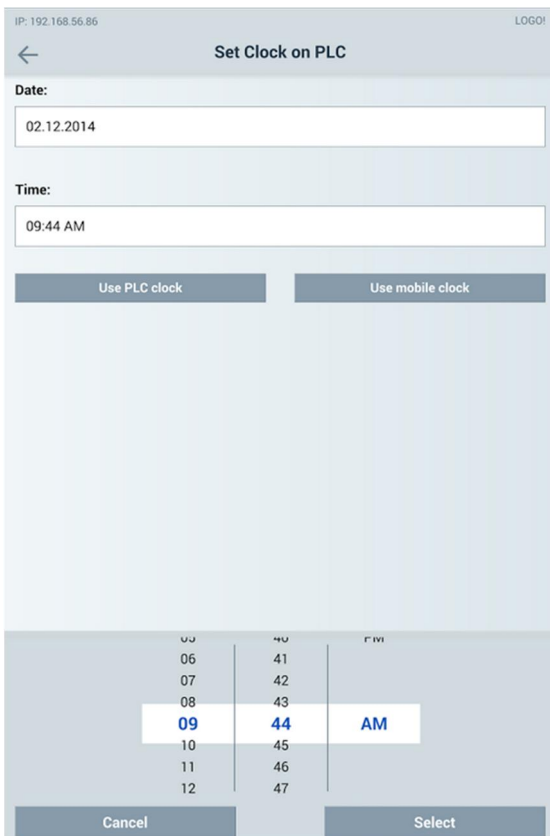
... modify and display values in a table

Configured values in the LOGO! program, such as function block parameters or network I/O, can be represented in a table and modified.



... graphic display of values

Several of the configured values can be selected in the table and be graphically displayed in a trend view. A further configuration of the trend view is not necessary. The scale is adjusted automatically; in addition, the user-specific name of the selected values and the actual address are displayed.



... edit the LOGO! date and time

Furthermore, the LOGO! date and time can be read, manually modified or be adapted to the current date and time of the mobile device.

Note

Operating the plant on site, for example with LOGO! Text Display or SIMATIC Panel, is not affected by the LOGO! App and can be performed simultaneously

Further information is available at: <http://www.siemens.de/logo>

1.2 Download of the LOGO! App

Link to the download versions:

<http://w3.siemens.com/topics/global/en/industry/future-of-manufacturing/industry-apps/Pages/industry-apps.aspx>

QR code for
SIMATIC 2go
page



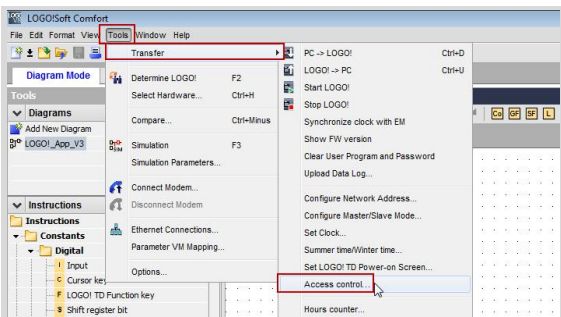
2 Instruction

2.1 Default settings and creating a connection with LOGO!

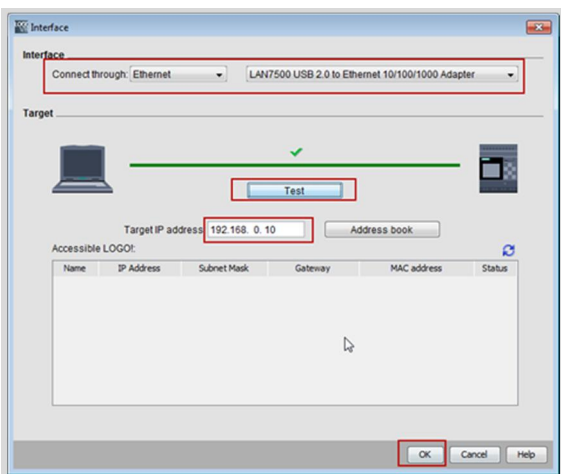
2.1.1 Specifying the password and access for the LOGO! App in LOGO! Soft Comfort

Prior to accessing LOGO! via the LOGO! App you need to enable the access in the respective LOGO! controller as well as define a password for this access. These settings must be made in LOGO! SoftComfort V8 and be loaded into LOGO!.

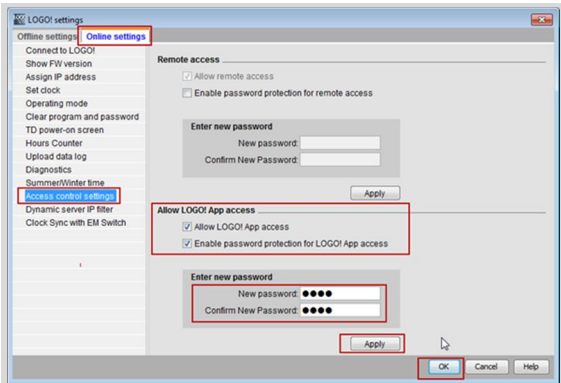
Proceed as follows:



In LOGO!Soft Comfort V8 you navigate to “Tools > Transfer > Access Control”.



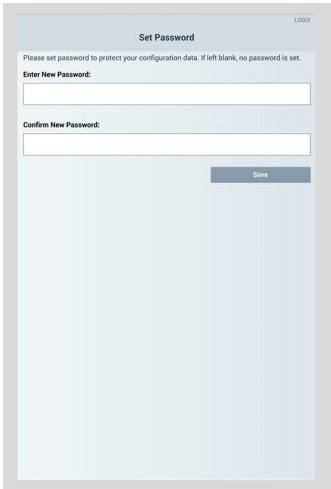
Select the “Interface” for your connection to LOGO! and enter the IP address of your LOGO!. Click “Test” in order to check whether the connection is successful. If the connection is successful click “OK” in order to load the program into the device.



Navigate to menu item “Access control settings” via the “Online settings” tab in “File > Properties”.

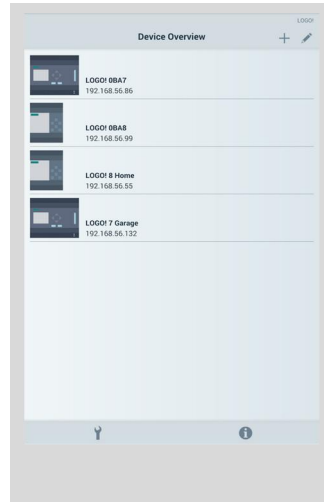
- Activate the “Allow LOGO! App access” checkbox.
- Activate the “Enable password protection for LOGO! App access” checkmark.
- Assign a password. This password must be identical with the respective password for the LOGO! connection in your LOGO! App!
(Device view of the respective LOGO! connection in the LOGO! App)
- Click on “Apply” to accept the password.

2.1.2 Settings in the LOGO! App

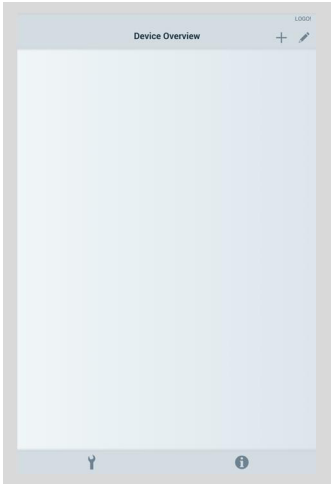


1. Password LOGO! App
When using LOGO! App for the first time, the password mask in which you can specify a password for the LOGO! App appears. (Respective specification in the "Settings" mask later on is also possible)

This password is only used for logging on to LOGO! App. Access to the respective LOGO! controller is specified in the device overview



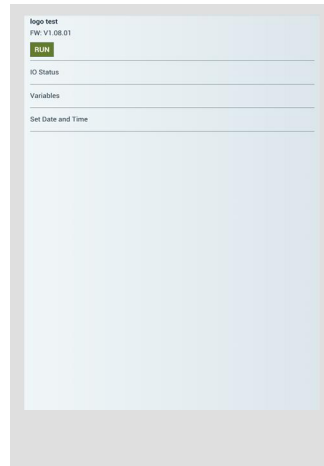
4. Device overview
After the connection with LOGO! has been established, you are taken back to the device overview where your specified LOGO! connections are displayed. Add connections to further LOGO! devices with "+"



2. Device overview
Subsequently, you are directed to Device Overview.

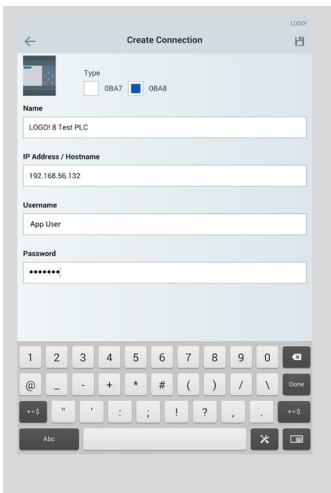
In this screen you can add new LOGO! devices (plus) or edit existing connections (pen).

You can also choose the Settings menu or the Information dialog here. (Spanner and info button)



5. Check connection
Selecting the respective LOGO! in the device overview takes you to the station information mask.

For an existing connection with LOGO!, the current state (RUN/STOP) and the firmware of LOGO! is shown.



3. Connections
In the "Create connection" mask you connect your mobile device to LOGO!
- The name refers to the connection and can be assigned by the user.
- In IP Address you enter the IP address of your LOGO! *)
- User name "App User" is default.
- In Password you enter the PW of your LOGO! controller, **which you have specified via LOGO!Soft Comfort.**



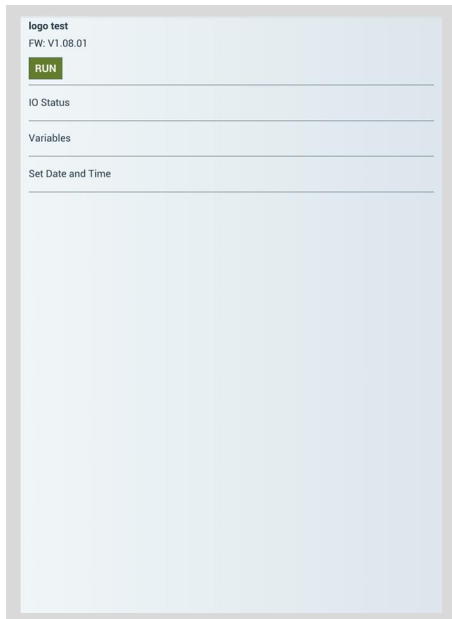
Settings
In menu item Settings, you can additionally specify
- Language,
- Refresh frequency
- and App password.

***) Note**

Your WLAN access point and the LOGO! must be located in the same IP address space. For example:

IP address LOGO!: 192.168.0.10
IP address WLAN: 192.168.0.x

2.2 Working with LOGO! App



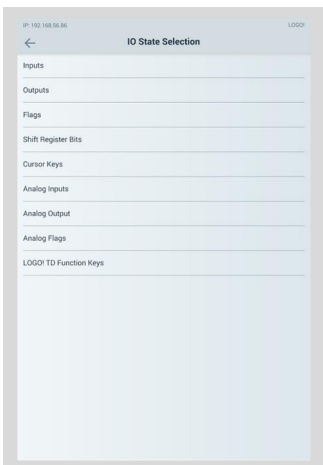
Starting point of the functions

In this "Station Info" overview mask the following functions can be accessed via the called masks:

- view IO status,
- view and change variables,
- set LOGO! date and time.

2.2.1 Status displays of inputs/outputs, flags, and keys

© Siemens AG 2015 All rights reserved




I/O State Selection

In "IO State Selection" you can access the status displays of inputs and outputs, flags of the LOGO! keys, and the text display.

Some examples of status displays are given in further screens on this page.



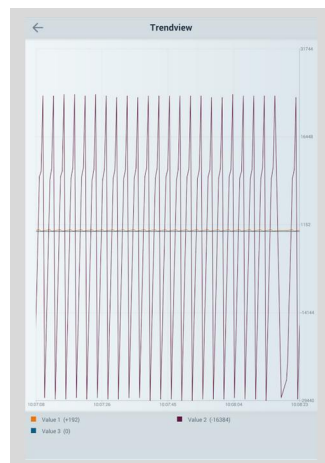
Trendview outputs

The  icon takes you to the Trendview mask where you can view the values in a graphic display.


Time/Data	Q1	Q2	Q3	Q4	Q5	Q6	Q7	Q8	Q9
09:34:21	0	0	0	0	0	0	0	0	0
09:34:21	0	0	0	0	0	0	0	0	0
09:34:20	1	1	0	0	0	0	0	0	0
09:34:20	1	1	0	0	0	0	0	0	0
09:34:19	1	1	0	0	0	0	0	0	0
09:34:19	1	1	0	0	0	0	0	0	0
09:34:18	1	1	0	0	0	0	0	0	0
09:34:18	1	1	0	0	0	0	0	0	0
09:34:17	0	0	0	0	0	0	0	0	0
09:34:17	0	0	0	0	0	0	0	0	0
09:34:16	0	0	0	0	0	0	0	0	0
09:34:16	0	0	0	0	0	0	0	0	0
09:34:15	0	0	0	0	0	0	0	0	0
09:34:15	0	0	0	0	0	0	0	0	0
09:34:14	1	1	0	0	0	0	0	0	0

Outputs

Pressing "Outputs" shows the state and a short state history of the output signals.

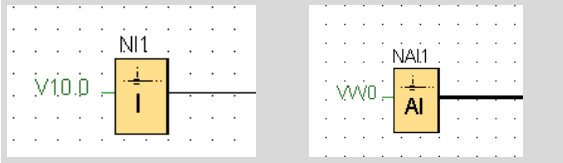


Trendview analog values

The  icon takes you to the Trendview mask where you can view the analog values in a graphic display.

2.2.2 Displaying and changing LOGO! variables

Digital and analog network inputs



Digital and analog network inputs can be addressed directly in LOGO! App using the respective V address.

Analog FB parameters

ID	Block	Parameter	Type	Address
1	B001 [PI controller]	PV, amplified	Word	2
2	B001 [PI controller]	Aq	Word	4
3	B002 [Asynchronous Pulse Generator]	Pulse Width (TH)	Word	6
4	B002 [Asynchronous Pulse Generator]	Interpulse Width (TL)	Word	8
5	B002 [Asynchronous Pulse Generator]	Pulse Width (TH) Time Base	Byte	10
6	B002 [Asynchronous Pulse Generator]	Interpulse Width (TL) Tim...	Byte	11
7	B003 [Up/Down counter]	Counter	DWord	16
8				

In order to display or change analog FB parameters in LOGO! App you need to enter these FB parameters into the parameter VM table in LOGO! Soft Comfort. (Menu item "Tools > Parameter VM assignment")

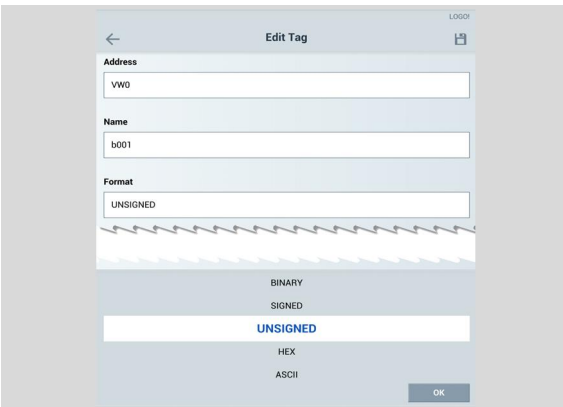


FB parameter - read only (actual value in LOGO!)



FB parameter - read and write

Calling the variable in LOGO! App



Select the "Variables" mask in the "Station Info" mask.

- The address corresponds to the V address of your network input or the FB parameter in the LOGO! program.
- Assign a name to the variable.
- In Format you select the display format for the variable. For digital variables, select "BINARY". For analog variables, select the desired display format, for example UNSIGNED.



Enter the desired value in "New Value". Tapping the "Write to PLC" button accepts the value as current variable value in LOGO!.

2.2.3 Setting date and time



1. Date and time

Set date and time individually by selecting "Set Clock on PLC" in the Station info.